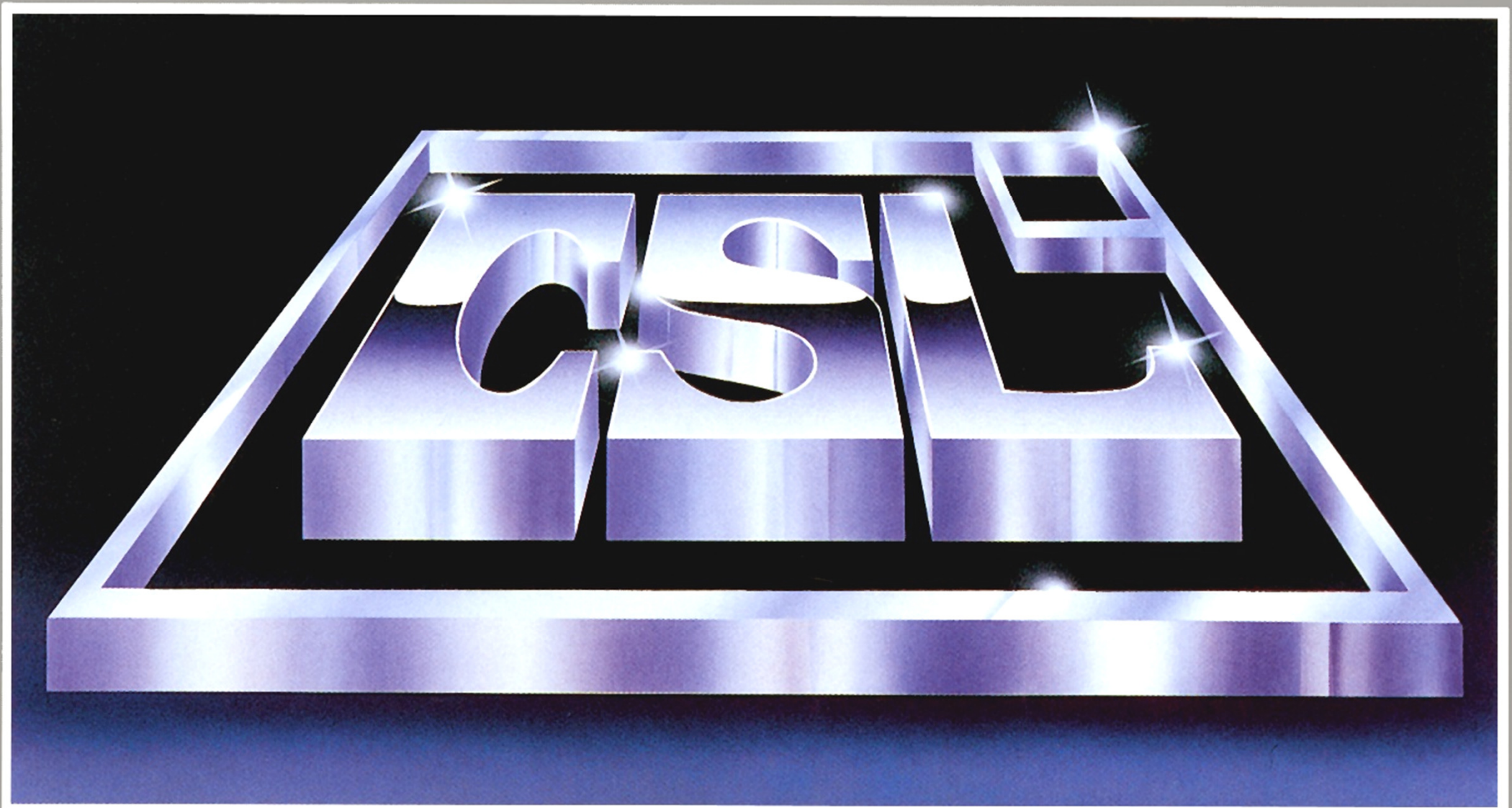
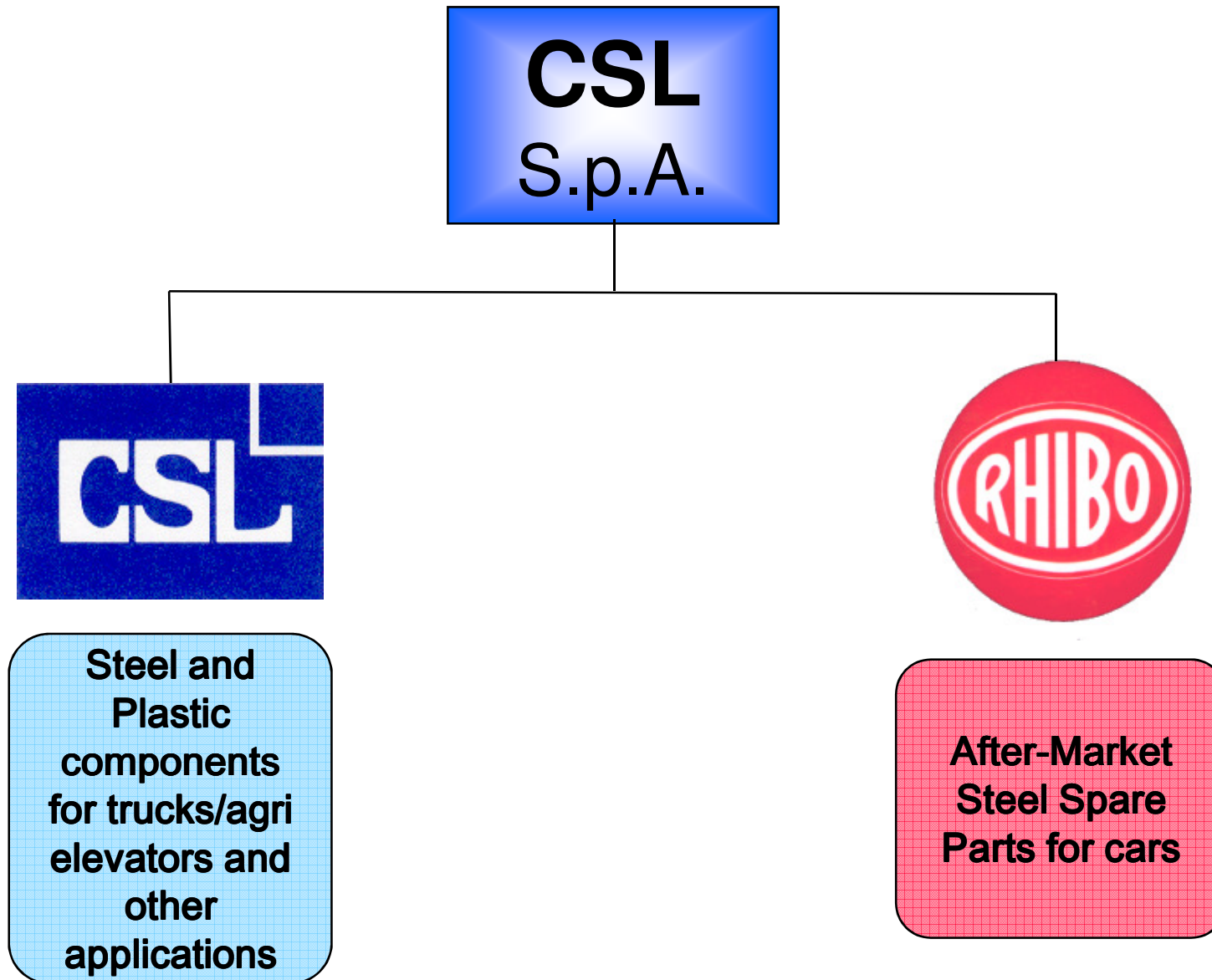


CSL GROUP





THE GROUP STRUCTURE



OUR VALUES

*« Our commitment is to conduct businesses with integrity, fairness and excellence, simultaneously balancing economic success with **sustainability**, producing longstanding value to our shareholders, customers and all other stakeholders »*

CSL Group Chairman - Giovanni Germano

2003

-

2022

ETHIC CODE

Board of Directors May 30, 2003

**CODE of
CONDUCT**

Board of Directors March 24, 2015

**CSL Supplier
Code of Conduct**

2015

**Code of Basic
Working Conditions**

2015

- **INTEGRITY**
- **EXCELLENCE**
- **INNOVATION**
- **SAFETY**
- **ENVIRONMENT**
- **COMMUNITIES**
- **DIVERSITY**
- **CORPORATE GOVERNANCE**

Building Value Through **Sustainable** Practices

QUALITY & SAFETY ARE OUR COMMITMENT

ISO 9001:2015

ISO 45001:2018

ISO 14001:2015

PEFC 1002:2013





THE CSL GROUP AT A GLANCE

In business since

1970

Sales (2021)

30

Millions €

Net Financial
Position = Net Cash

30

Millions €

Real estate properties

60

Thousands of sq.m.

The CSL Group is among **European leaders** in some of the segments it operates (After-market steel body parts) or has a very good **market positioning** in other sectors (Steel parts for trucks and elevators).

The CSL Group has a great product/market and customer base **diversification**.

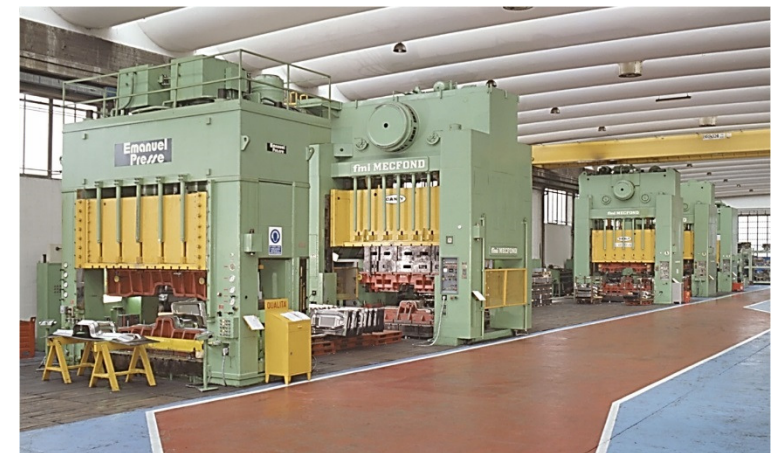
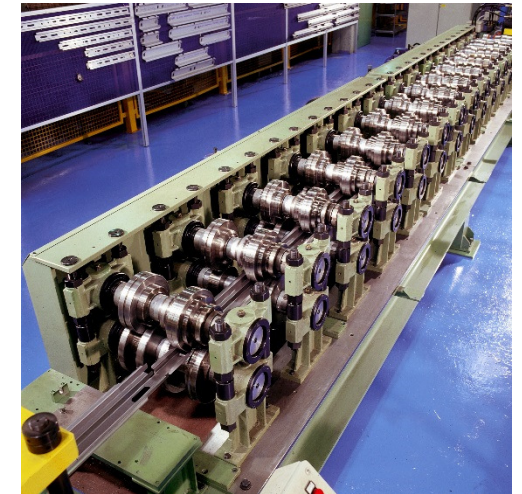


The CSL Group benefits from an extraordinary **financial soundness** in order to be able to support new customer's projects.

With our values, as a company, we are fully committed to **sustainability, quality and customer satisfaction**.

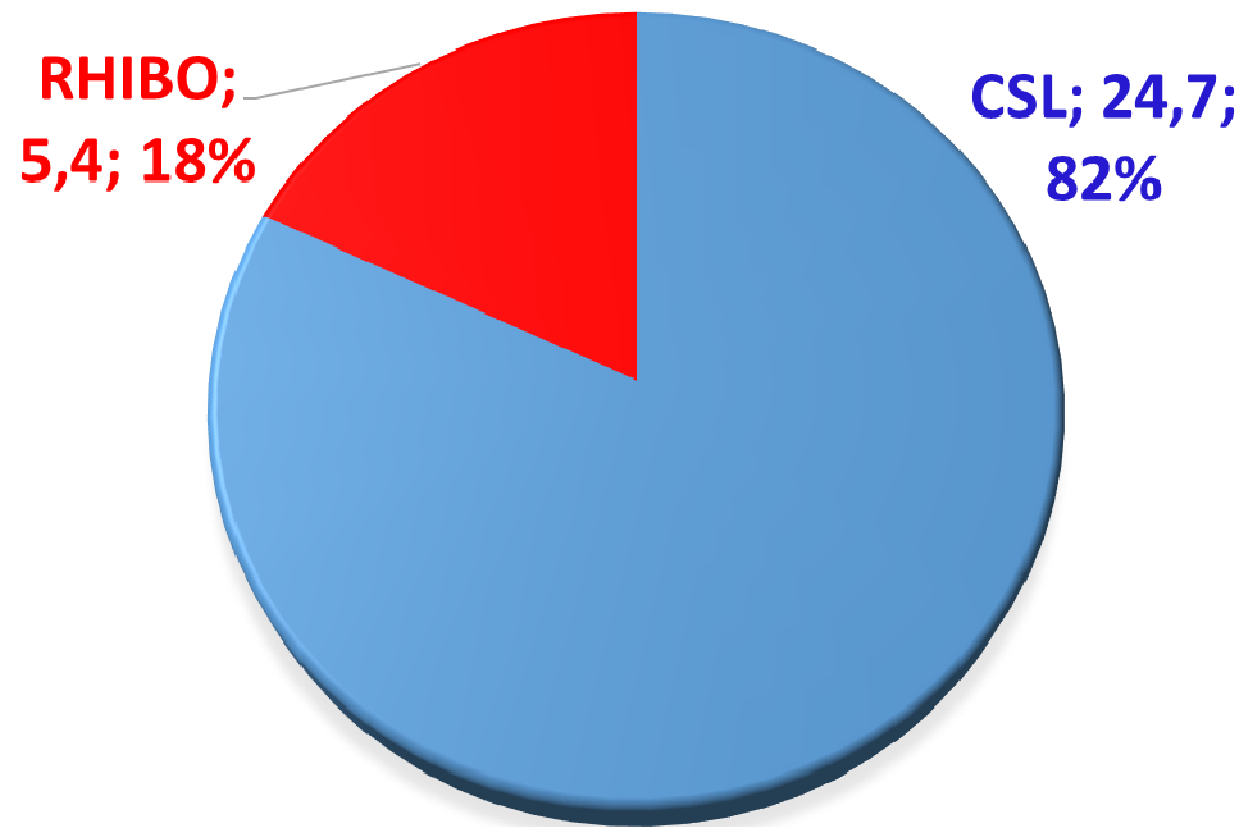
We are focused on providing **innovative solutions**.

Our lean structures and highly motivated teams, ready to rapidly adapt to change, are designed to deliver superior **flexibility**.



CSL GROUP - TURNOVER

TURNOVER BY COMPANY: 2021 (30,1 M€) ; %

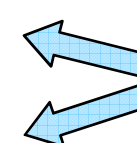


CSL GROUP – FINANCIAL HIGHLIGHTS

Amounts in Euro/1.000

Year	2017	2018	2019	2020
Turnover	42.050	29.008	27.104	21.845
YoY change %	12,2%	-31,0%	-6,6%	-19,4%
EBITDA	3.783	4.217	4.929	4.105
EBITDA Margin %	9,0%	14,5%	18,2%	18,8%
EBT	2.619	2.342	3.772	3.151
Ebt Margin %	6,2%	8,1%	13,9%	14,4%
Net Result	1.502	1.522	2.965	1.319
Net Result %	3,6%	5,2%	10,9%	6,0%

Focus on
results not
on turnover
through
Customer
Satisfaction



Positive net
results since
1982

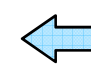


Net Financial Position - Net Cash	25.747	26.061	27.535	31.005
Shareholder's Equity	33.743	33.410	35.448	35.272
Tangible Investments	807	1.111	795	103
Total Assets	57.051	56.693	52.463	52.535
N. of employees	127	120	116	104

Extremely sound
financial standing



n. of employees
decrease due to
disposals of non-
core businesses



CSL Group Balance-Sheets are audited and certified by PriceWaterhouseCoopers since 1995



CSL GROUP – Plants & Offices

Owned Land & Buildings				Rented Land & Buildings			
Company	Location	Land sq.m	Facilities sq.m	Company	Location	Type	Area sq.m
CSL	LA LOGGIA - TURIN	11.541	5.345	CSL	LA LOGGIA - TURIN	Warehouse	1.000
CSL	PONTEDERA - PISA	35.443	17.683	CSL	LA LOGGIA - TURIN	Factory	3.000
CSL	CENTO - FERRARA	1.878	1.192				
RHIBO	BAGNASCO - CUNEO	32.300	7.678				
RHIBO	CEVA - CUNEO	34.393	18.273				
RHIBO	GARESSIO - CUNEO	22.024	8.866				
TOTAL		137.579	59.037	TOTAL			4.000



CSL S.p.A. - Products, markets, customers

- MOLDING AND ASSEMBLING PARTS AND STEEL SUBGROUPS
- PRODUCTION OF MATRICES AND EQUIPMENT FOR STEEL AND PLASTIC PARTS
- MOLDING AND ASSEMBLING PLASTIC PARTS
- ROLL FORMING – LASER CUTTING
- AUTOMATIC BENDING

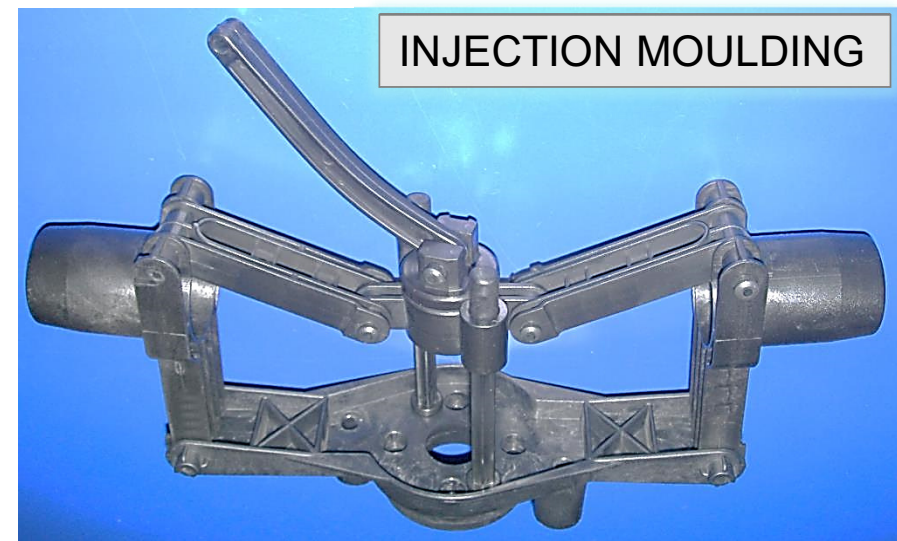
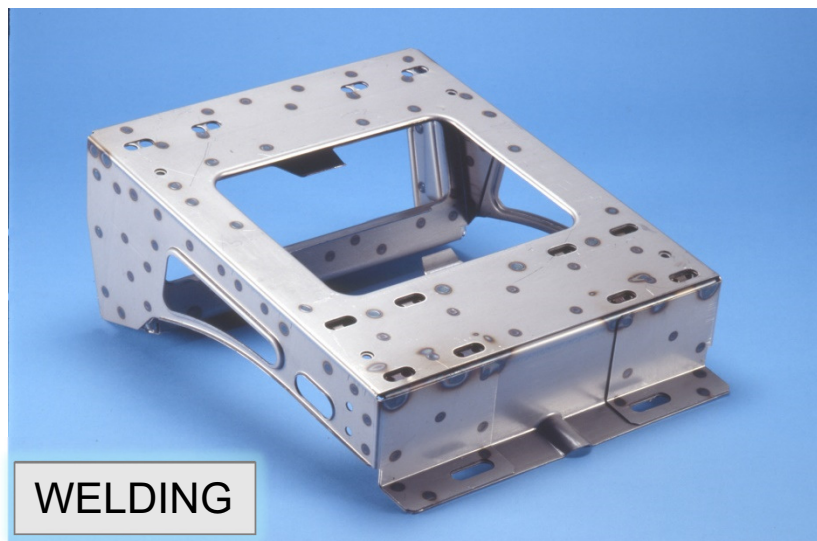
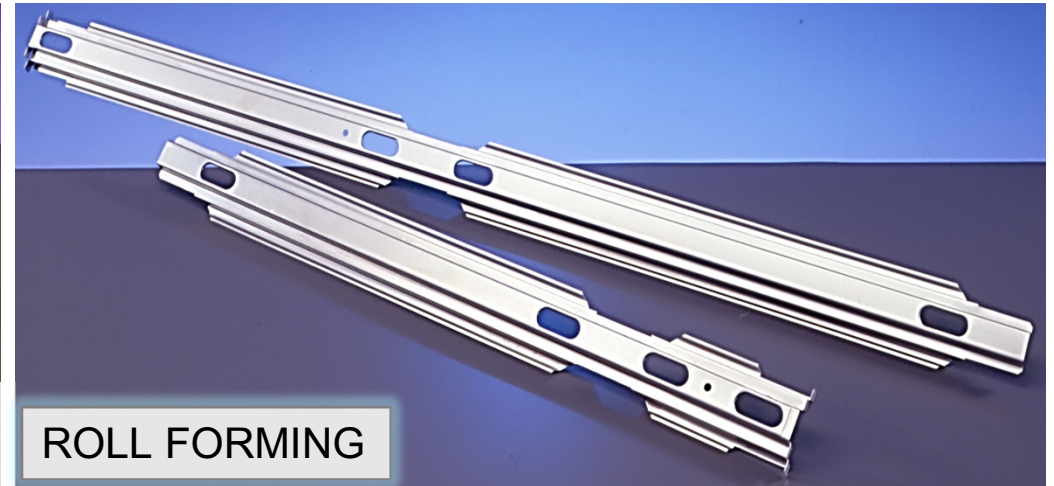


- q OEM (TIER 1) AUTOMOTIVE COMPONENTS
- q TIER 2 AUTOMOTIVE COMPONENTS
- q ELEVATOR COMPONENTS
- q AIR CONDITIONING SYSTEM COMPONENTS
- q OTHER SECTORS COMPONENTS

MAIN CUSTOMERS



CSL S.p.A. - Products & Technologies



CSL - Technology Upgrade 2018

**LASER CUTTING MACHINE
PLATINO 1530 FIBER 4KW
& AUTOMATIC COMPACT
TOWER 10 PALLETS**



**SERVO ELECTRIC PRESS -
BENDING MACHINE EP-1336**



CSL - Technology Upgrade 2019

BIGslim
spessore sottile GRANDI FORMATI
thin thickness BIG SIZES



FERRARI & CIGARINI

MFL004 Stradora

**fully automatic CNC bridge saw used for cutting slabs,
makes holes for sinks, making miter cuts and features a
360° head rotation**

RHIBO - Products, markets, customers

- STEEL SPARE PARTS PRODUCTION
(HOODS, FENDERS, FRONT CROSS BARS etc.)
- CAR REPLACEMENT BODY PARTS TRADING



- q EUROPEAN LEADER OF
STEEL REPLACEMENT BODY
SPARE PARTS
- q 66 COUNTRIES IN THE
WORLD – 500 CUSTOMERS

MAIN CUSTOMERS

MAIN WHOLESALE DISTRIBUTORS OF
REPLACEMENT BODY PARTS

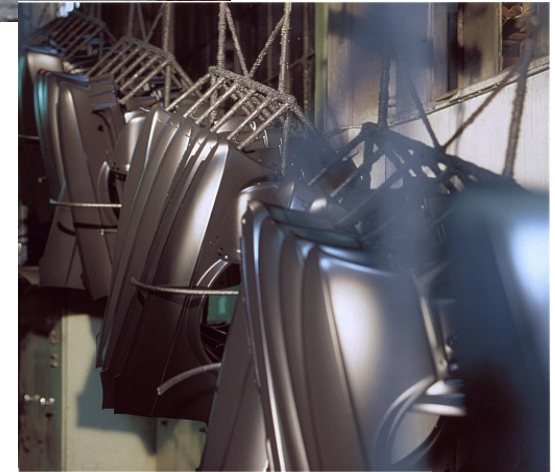


DIEDERICHS  Karosserieteile GmbH

RHIBO – Products & Technologies



SPARE PARTS STAMPING AND ASSEMBLY



CATAPHORESIS PAINTING



DESIGN SYSTEMS AVAILABLE :

Engineering Solution for the Automotive Industries

- UNIGRAPHICS - NX 5 - NX 7



SIEMENS

PLM Software

- CATIA5



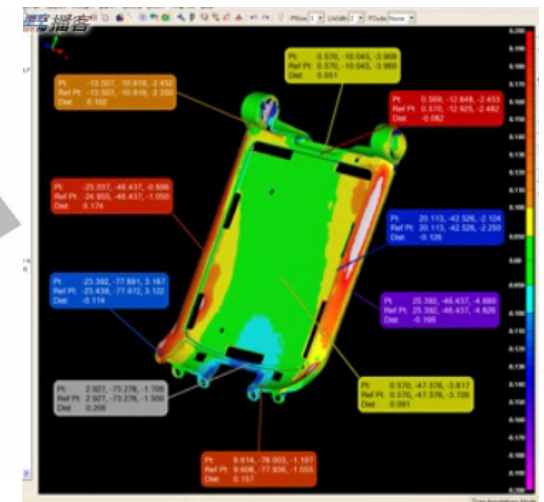
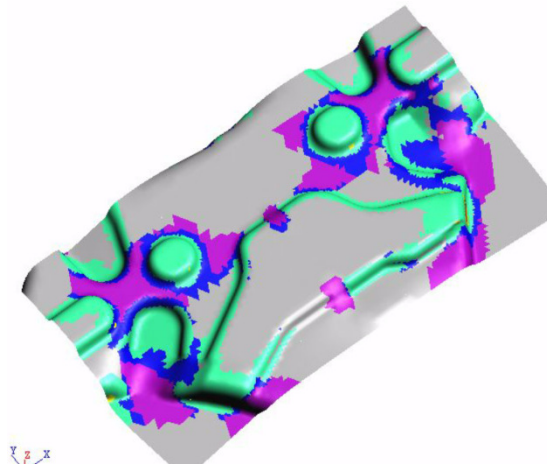
- Pro/ENGINEER



- VERO



Feasibility Solution to ensure the manufacturability



SPECIAL TOP 500
LA CLASSIFICA DI PWC

**Le aziende torinesi
che fanno la differenza**

TOP 500 Le imprese di Torino e provincia TORINO

Dati di migliaia di euro

Rank 2019	Rank 2018	Ragione sociale	Valore della produzione		Utile (perdita)		Indebitamento finanziario netto	
			2019	2018	2019	2018	2019	2018
486	489	UBROKER SRL	28.400	18.549	121	212	3.562	-408
487	435	VALORE SOCIETÀ A RESPONSABILITÀ LIMITATA	28.386	30.084	121	22	1.383	1.378
488	447	MANIFATTURA PEZZETTI SRL	28.101	29.289	1.936	2.363	3.316	3.714
489	439	SIRIA Srl (CSL)	28.085	29.972	3.075	1.023	-32.324	-30.426
490	480	SACEL SRL	27.940	25.447	798	570	7.207	9.645
491	491	S.E.I. - SOCIETÀ EDITRICE INTERNAZIONALE PER AZIONI	27.884	16.944	1.795	1.297	4.460	-7.296
492	457	CORE INFORMATICA SRL	27.849	27.991	59	92	3.770	2.554
493	474	EUROCHIMIND SPA	27.812	26.097	-9	591	5.577	3.735
494	471	SPACE SRL	27.745	26.563	2.952	2.147	-10.956	-7.419
495	477	CHIERESE PAK SRL	27.651	25.587	-8.630	-7.267	7.176	-80
496	449	FACET SRL	27.610	29.211	501	1.488	-8.528	-7.812
497	485	BONETTO SRL	27.518	20.927	419	329	6.639	9.529
498	473	SOFFIERIA BERTOLINI SPA	27.500	26.126	3.976	3.370	-1.712	-452
499	445	KNAUF INSULATION SPA	27.498	29.417	1.368	598	-2.424	1.007
500	437	SOCIETÀ TORINESE INDUSTRIE GRAFICHE EDITORIALI SPA	27.494	30.050	-2.714	-395	7.040	6.486



UNIONE INDUSTRIALE
TORINO

Nella TOP 500 delle imprese più performanti stilata da PwC ci sono tante aziende iscritte alla nostra Unione Industriale. Imprenditori e società del nostro territorio con talento e visione, capaci di essere più grandi e più forti.

ui.torino.it

#UISocial | | |

500
VOLTE BRAVI!



THANK YOU FOR YOUR KIND ATTENTION